



Be-Tech
Push And Pull Fingerprint Digital Door Lock
with anti-panic

- Auto Deadbolt Mortise
- Fingerprint & RF Card & Touchpad & APP
- 60mm Backset Lockcase
- Matte Black



Easy Access
Leading Keyless Solutions Since 1992

**Various access**

Be-Tech T1 has four access solutions, Fingerprint, APP, RF Card key or PIN code for your convenience.

**One-touch fingerprint verification**

One-touch Fingerprint verification technology has been applied to conveniently read a fingerprint in one shot.

**Operation status notification**

Whenever any operation is made, the LED indicator informs you what is happening through different colors and signs.

**Scramble code**

You can enter random numbers prior to the right code when there is a chance of exposing it to others.

**Automatic locking**

Door lock will be locked automatically after opening door a few seconds. (Manual operation is also available)

**Missing key invalidation**

Once you lose your key, it has no validation as long as you re-register rest of your keys.

**Anti-panic exit system**

For convenience and in case of emergency, it allows you to open the door by simply pulling its handle from inside.

**Alarm (Incorrect Fingerprint, RF Card or PIN code)**

Alarm will be on and last for 60 seconds if anyone attempts to open the lock with incorrect Fingerprint, RF Card or PIN code for 5 times.

**Low battery warning signal**

A continuous "beep" sound during door access will alert you to replace batteries.

**Invisible keypad**

Keypad number can be seen only when you touch the screen with your palm.

**Mechanical key override**

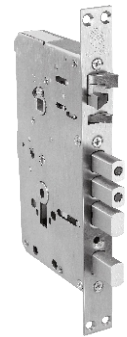
For emergency, it can also be unlocked with a mechanical key.

**Temporary access code**

One-Time Code available for convenient temporary access.

**Pull and push handle design**

Push easy access to your family, Pull trouble out of your live.

**Convenient****Model****Reliable****Safe****GB Lockcase****Specification**

Parts	Specifications	Remarks
Front(Front Body)	80×384×84(with door handle)mm, Aluminium Alloy	Temperature: Workable -20°C~70°C Humidity: Workable 20%~95%
Back(Back Body)	80×353×84(with door handle)mm, Aluminium Alloy	
Door Thickness	Applicable Range 40-80mm(Standard screw package is for 40-60mm, kindly contact us if requires other thickness)	
Lock case	Stainless Steel	
Fingerprint	Up to 111 Groups (1 Master Fingerprint , 100 User Fingerprints & 10 Alarm Fingerprints)	
Card Keys	Up to 51 Keys(1Master Key & 50 User Keys)	
Codes	Up to 21 Groups (1 Master Code, 10 User codes & 10 Visitor Codes)	
Battery	8X1.5V AA Alkaline Batteries	Last up to 12 months(10 times used a day)

Contact us:**Guangdong Be-Tech Security Systems Limited**

No.17, Ronggui Technology Industrial Park

Keyuan 3rd Road, Shunde, Foshan

Guangdong, P.R.China

Tel:+86 757 28376123 | Fax:+86 757 28308823

E-mail:export@be-tech.com.cn | www.betechlock.com

Specifications may change without notice.