



Be-Tech  
Premium Fingerprint Digital Door Lock

- Fingerprint & RF Card & Pin Code
- Black



Easy Access  
Leading Keyless Solutions Since 1992

**Various access**

Be-Tech C200FMT has three access solutions, Fingerprint, RF Card key or PIN code for your convenience.

**One-touch Fingerprint Verification**

One-touch Fingerprint verification technology has been applied to conveniently read a fingerprint in one shot.

**Operation status notification**

Whenever any operation is made, the LED indicator informs you what is happening through different colors and signs.

**Scramble code**

You can enter random numbers prior to the right code when there is a chance of exposing it to others.

**Automatic locking**

Door lock will be locked automatically after opening door a few seconds. (Manual operation is also available)

**Missing key invalidation**

Once you lose your key, it has no validation as long as you re-register rest of your keys.

**Anti-panic exit system**

For convenience and in case of emergency, it allows you to open the door by simply turning its handle from inside.

**Alarm (Incorrect Fingerprint, RF Card or PIN code)**

Alarm will be on and last for 60 seconds if anyone attempts to open the lock with incorrect Fingerprint, RF Card or PIN code for 5 times.

**Low battery warning signal**

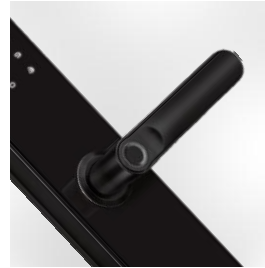
A continuous "beep" sound during door access will alert you to replace batteries.

**Invisible keypad**

Keypad number can be seen only when you touch the screen with your palm.

**Mechanical key override**

For emergency, it can also be unlocked with a mechanical key.

**Convenient****C200FMT****Model****Reliable****Safe****Multipoint mechanical lockcase****Specification**

Parts	Specifications	Remarks
Front(Front Body)	81(W)×373(H)×83(D)mm(with handle);Aluminium Alloy	Temperature: Workable -20°C~70°C Humidity: Workable 20%~95%
Back(Back Body)	81(W)×373(H)×78(D)mm(with handle);Aluminium Alloy	
Door Thickness	Applicable Range 40-80mm(Standard screw package is for 40-60mm, kindly contact us if requires other thickness)	
Lock case	Stainless Steel	
Fingerprint Card Keys Codes	Totally 10 Masters + 290 Users. Number of (Fingerprint+Card Keys+Codes) could be free combination (Maximum 100 groups fingerprint) .	
Battery	4X1.5V AA Alkaline Batteries	Last up to 12 months(10 times used a day)

**Contact us:**

**Guangdong Be-Tech Security Systems Limited**  
 No.17, Ronggui Technology Industrial Park  
 Keyuan 3rd Road, Shunde, Foshan  
 Guangdong, P.R.China  
 Tel:+86 757 28376123 | Fax:+86 757 28308823

E-mail:export@be-tech.com.cn | www.betechlock.com|www.betechiot.com

Specifications may change without notice.